

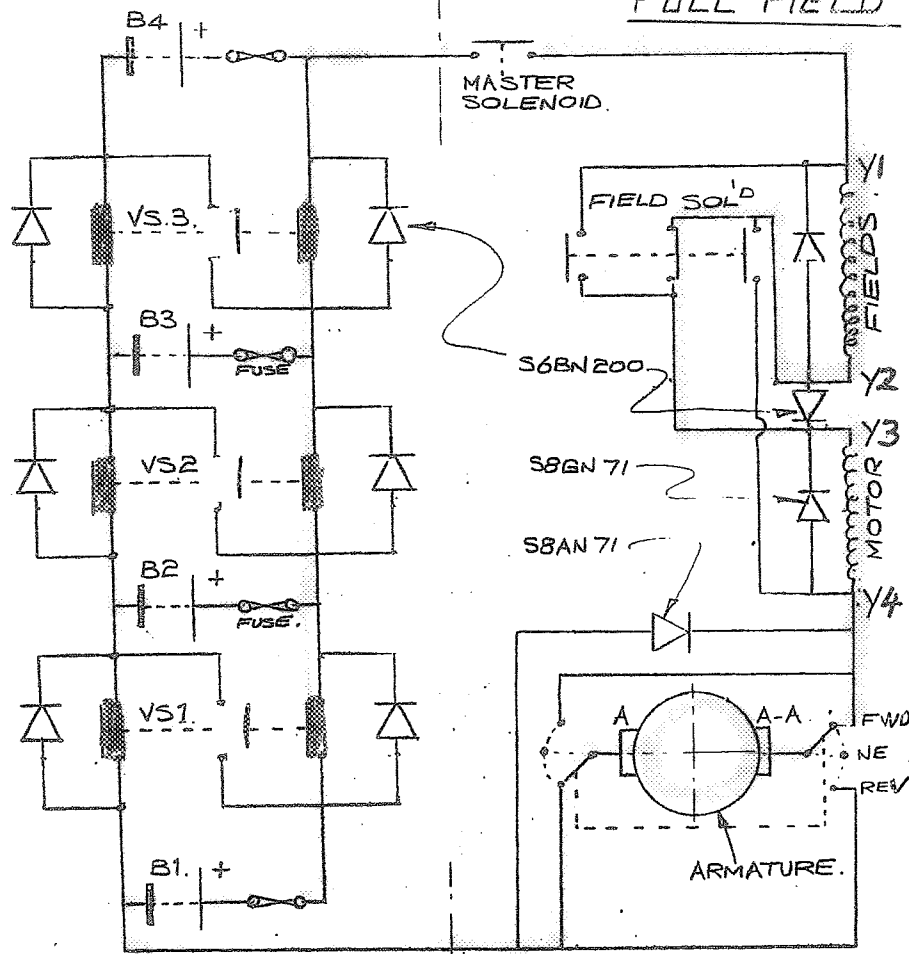
TRACTION CIRCUIT
HYBRID SOLENOID & LEVER REVERSE
SYSTEM.

SHOWN AT REST.
 BATTERY ALL IN SERIES = 48 VOLT

24 VOLT

VS1 & VS3 ENERGISED
 B1 & B2 IN PARALLEL
 B3 & B4 IN PARALLEL

FULL FIELD

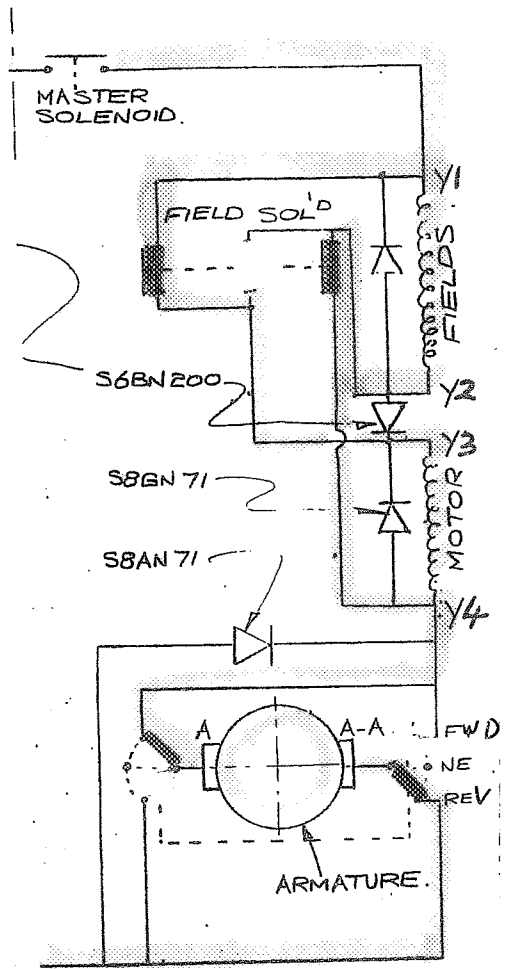


12 VOLT

MOTOR FORWARD

VS1 - VS2 - VS3 ALL ENERGISED
 ALL BATTERY IN PARALLEL = 12 VOLT

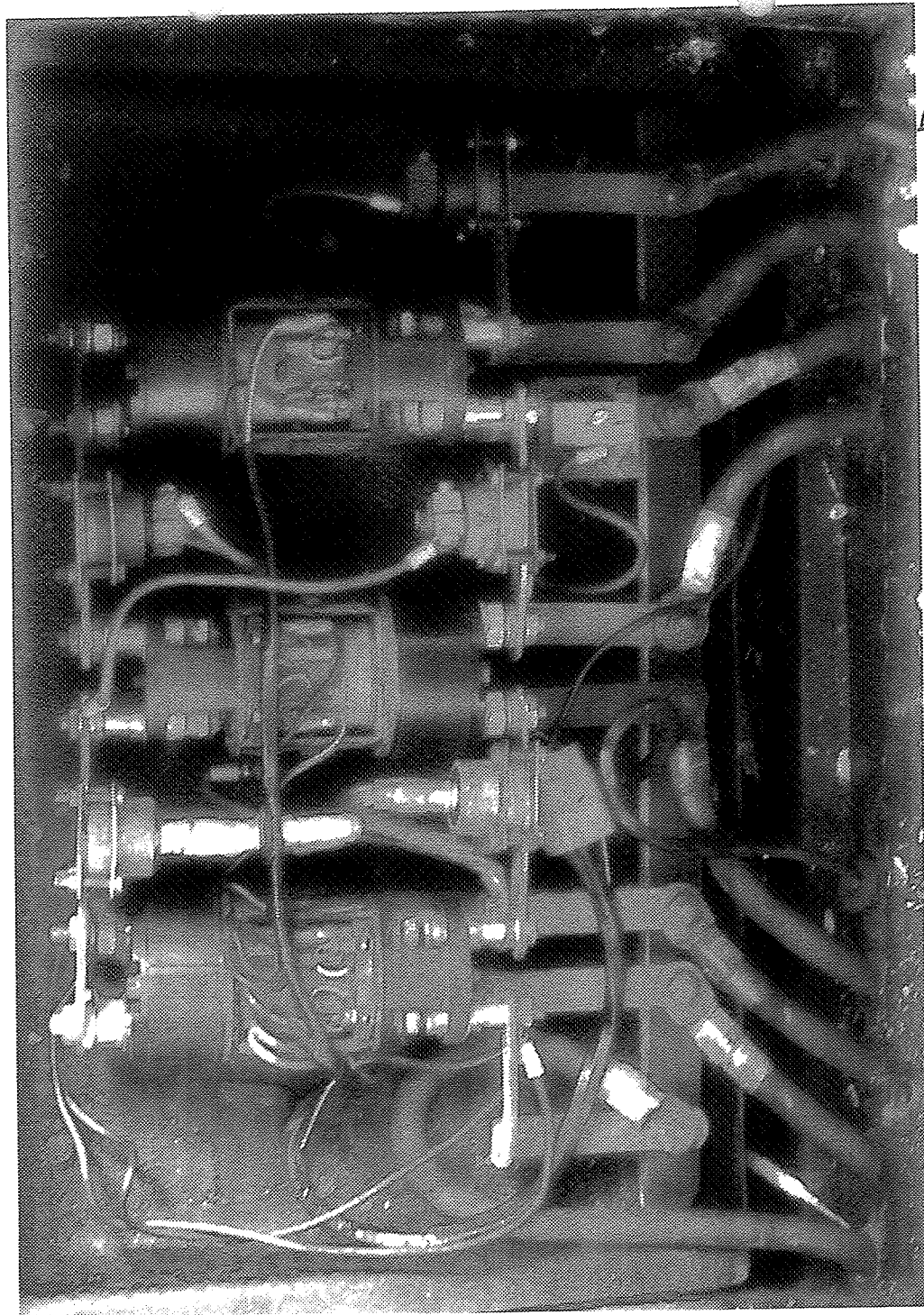
WEAK FIELD



MOTOR REVERSE

(LEVER IN REVERSE)

FIELD CONTROL ENERGISED
FIELD IN PARALLEL



B4+

B3+

B4-

B3-

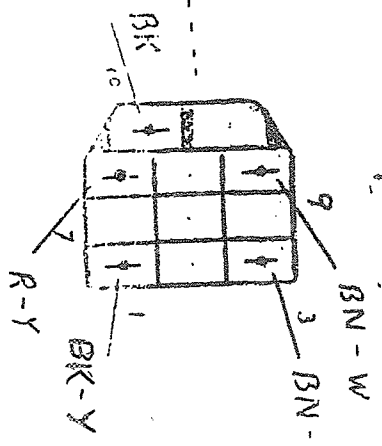
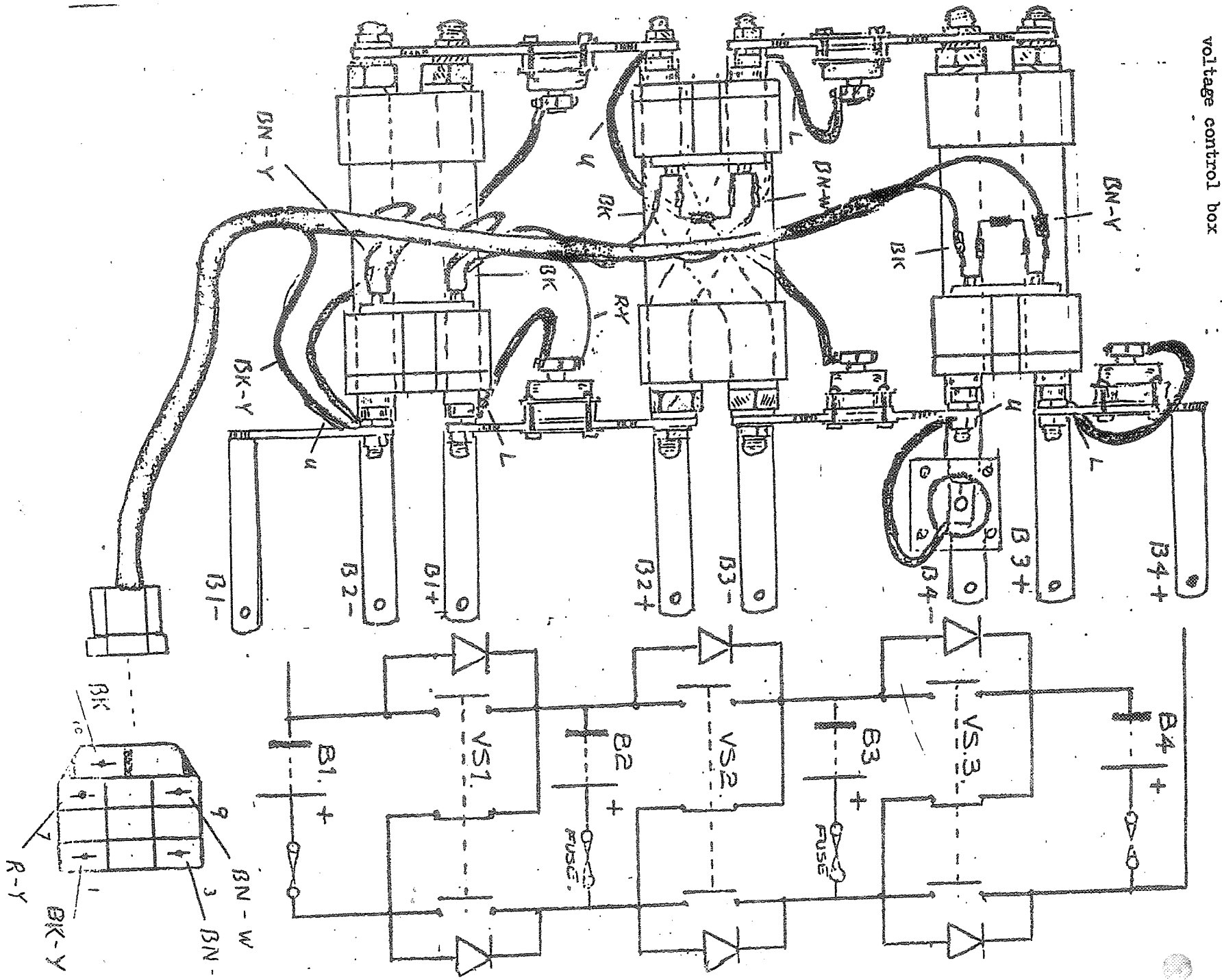
B2+

B1+

B2-

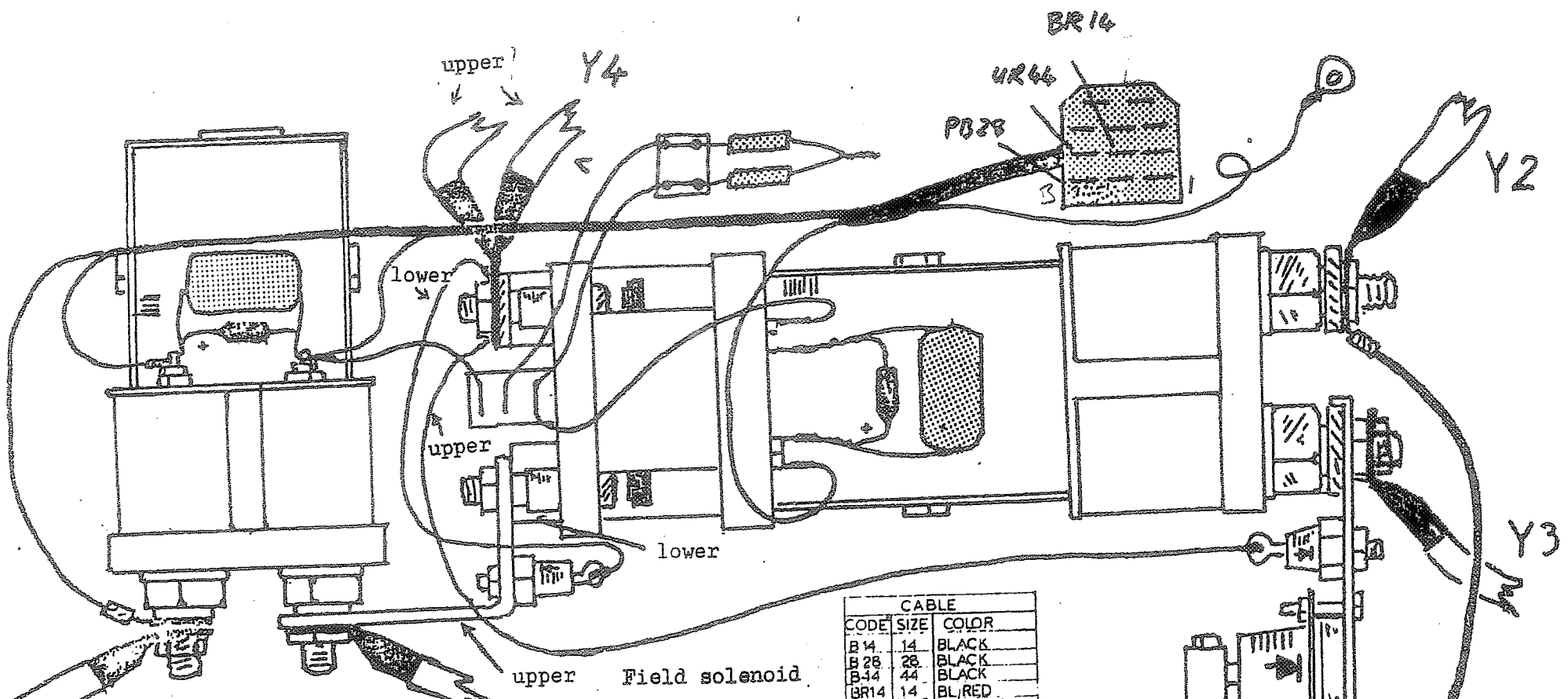
B1-

voltage control box



RIGHT BOX

LEFT BOX



CABLE		
CODE	SIZE	COLOR
B 14	14	BLACK
B 28	28	BLACK
B 44	44	BLACK
BR14	14	BL/RED
BG28	28	GR/RI ACK
GY14	14	GR/YELLOW
N 44	44	BROWN
PB28	28	PURPLE/BL
RW14	14	RED/WHITE
RY 28	28	RED/YELLOW
UR 44	44	BLUE/RED
Y 44	44	YELLOW
RB 14	14	RED/BLACK

48V +

Master solenoid

upper Field solenoid

S6BN200

To reverse switch

